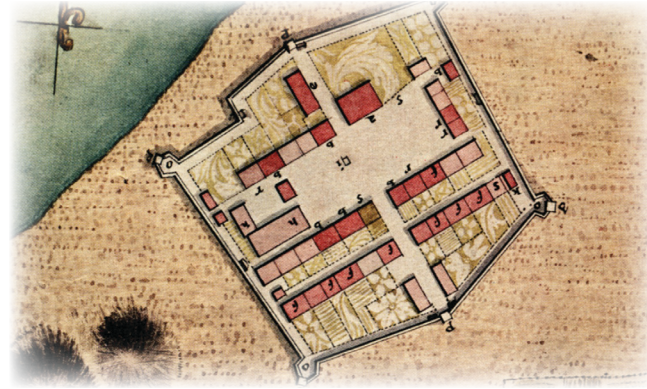


## MAP & SCHEDULE

Welcome to Colonial Michilimackinac! As you walk through the site you are stepping back in time to an outpost on the edge in 1775, as the American Revolution began. The revolutionary events of 1775 directly impacted and altered the lives of everyone at Michilimackinac, despite their geographical isolation. All the buildings have exhibits or historical interpreters inside. While your visit to the fort is self-guided, you may find it easiest to begin your tour at the Voyageur Landing before heading inside, then following the numbered buildings.



## ARCHAEOLOGY IN PROGRESS

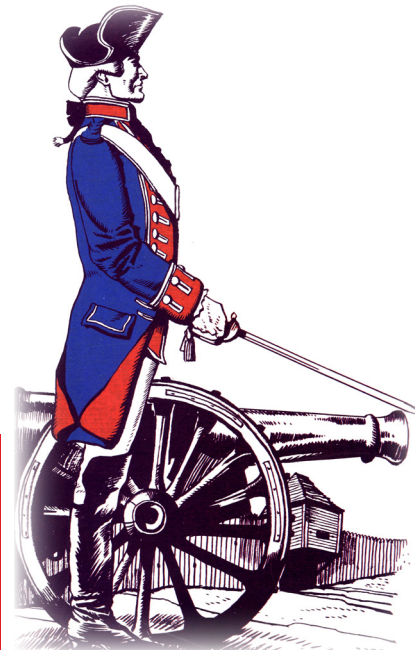
In its 67<sup>th</sup> season, the dig at Colonial Michilimackinac continues this summer, one of the longest ongoing excavations of its kind in the nation.



[mackinacparks.com](http://mackinacparks.com)  
#thisismackinac



## AMERICA250: YOUR AMERICAN REVOLUTION BEGINS AT MACKINAC.



Colonial Michilimackinac was an outpost on the edge, yet the revolutionary events of 1775 impacted and altered the lives of the historic residents here. Join the interpretive staff daily at 1:00 p.m. for a special program exploring the year 1775.

Over at Fort Mackinac, on Mackinac Island, the events of 1775 directly led to the establishment of the fort and village. Various programs and exhibits inside Fort Mackinac detail its founding during the American Revolution.

## HIGHLIGHTS



### LIVE PROGRAMS

Demonstrations by historical interpreters are conducted throughout the day. Consult the schedule inside for times and locations. Presentations are announced near the center of the fort.

### MOVIES

*Michilimackinac: Crossroads of the Great Lakes*, a 15-minute movie, is presented in the **King's Storehouse 5**. It plays every 20 minutes. *Attack! at Michilimackinac* presents the most dramatic event in the fort's history. It plays continuously in the **Southwest Rowhouse 11**.

### EXHIBITS

All of the buildings in the fort are open and furnished with period rooms or themed exhibits. Special exhibits include:

- *Slavery at the Straits*, in the **Southwest Rowhouse 11**, shows how, throughout the 17th and 18th centuries, slavery was an integral part of the community at Michilimackinac and in Michigan.
- *France at Mackinac 1670–1760* in the **South Southwest Rowhouse 20** explores Michilimackinac as it was under the French regime.
- *Treasures from the Sand* is an underground exhibit exploring the process of historical archaeology. Enter through the **Northwest Rowhouse 7**.
- *Redcoats on the Frontier* is a multi-room exhibit describing the life of British soldiers at Michilimackinac. Located in the **Soldier's Barracks 13**.

### EXTEND YOUR VISIT!

Colonial Michilimackinac is part of a family of historic sites in the Straits of Mackinac, including Old Mackinac Point Lighthouse and Historic Mill Creek in Mackinaw City, and Fort Mackinac and Historic Downtown Mackinac on Mackinac Island.

## VISITOR SERVICES

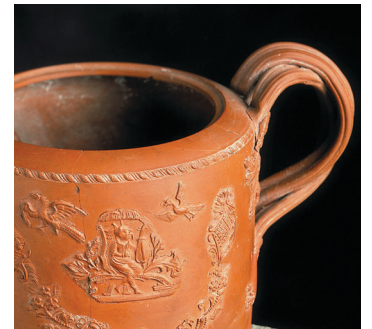
### SHOPPING

The Museum Store in the Visitor's Center and the **Hearthside Museum Store** in the **South Southwest Rowhouse 20** offer a wide range of books, souvenirs, and specialty gift items.



### RESTROOMS

Located in the **South Southwest Rowhouse 20** inside the fort, on the south entrance path **23** outside the fort, and inside the Visitor's Center.



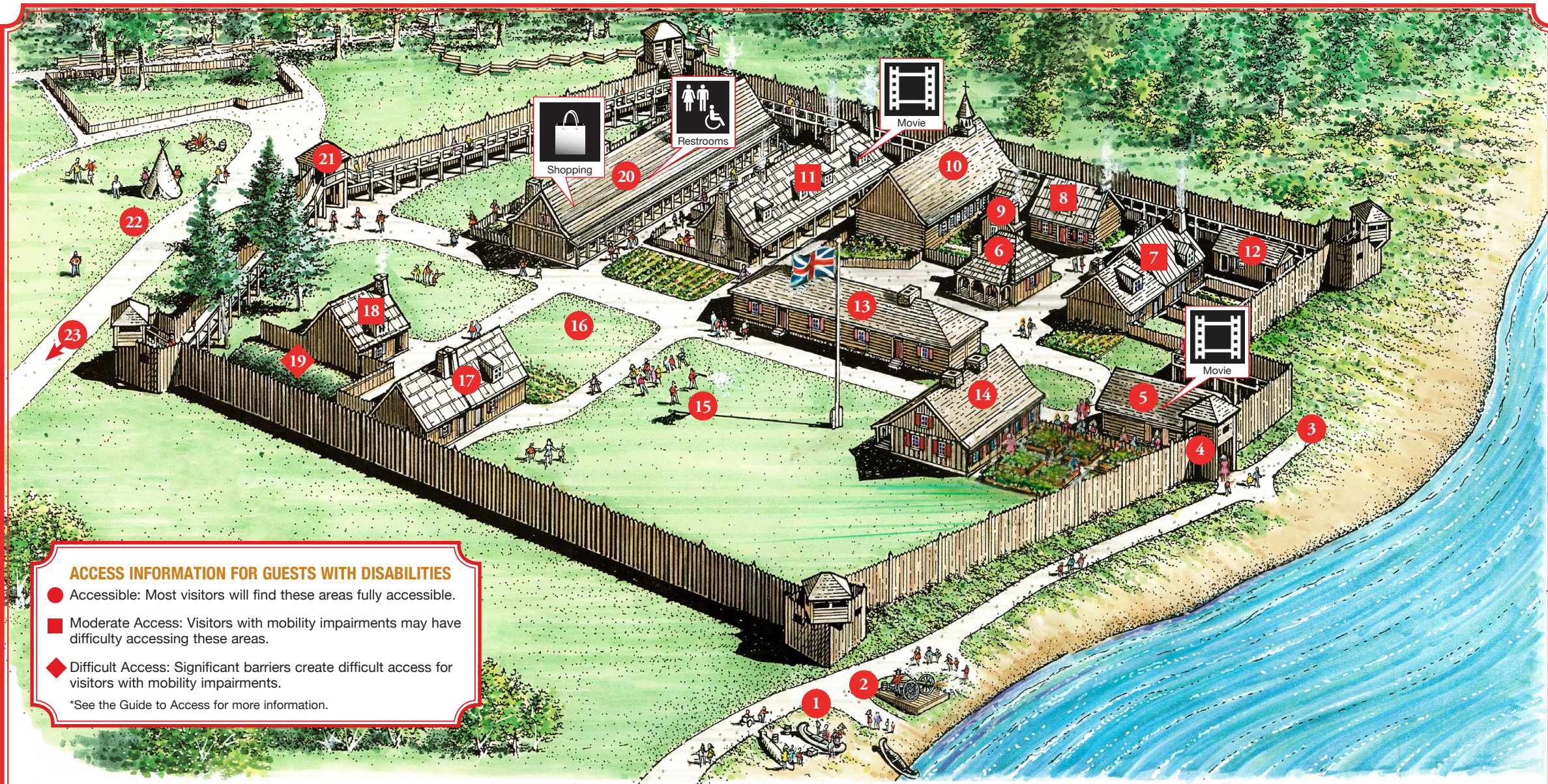
### COURTESIES

- Colonial Michilimackinac is a smoke-free site.
- Pets on leashes are welcome.
- Please silence electronic devices in the theaters and during live demonstrations and programs.
- Please cover ears for black powder firing demonstrations.
- Please respect other guests and our resources during your visit.



Generous support for many programs and exhibits is provided by Mackinac Associates.

Find out how to become a member or how to make a donation at the admission area or the **Hearthside Museum Store** in the **South Southwest Rowhouse 20**.



#### ACCESS INFORMATION FOR GUESTS WITH DISABILITIES

- Accessible: Most visitors will find these areas fully accessible.
- Moderate Access: Visitors with mobility impairments may have difficulty accessing these areas.
- ◆ Difficult Access: Significant barriers create difficult access for visitors with mobility impairments.

\*See the Guide to Access for more information.

#### DEMONSTRATION SITES AND PLACES OF INTEREST

\*Alternate program or entrance available. Please see the Guide to Access for information.

- |   |   |  |                                     |
|---|---|--|-------------------------------------|
| 1 Voyageur Landing  | 8 Priest's House*                         | 14 Commanding Officer's House                        | 19 Powder Magazine                  |
| 2-3 Artillery Platforms                                       | 9 Blacksmith Shop                         | 15 Parade Ground                                     | 20 South Southwest Rowhouse         |
| ■ Firing Demonstrations                                       | 10 Church of Ste. Anne*                   | ■ Musketry Firing & Other Demonstrations             | ■ <i>France at Mackinac</i> Exhibit |
| 4 Water Gate  | 11 Southwest Rowhouse                     | 16 Archaeological Site                               | ■ Hearthsides Museum Store          |
| 5 King's Storehouse   | ■ <i>Slavery at the Straits</i> Exhibit   | ■ In progress during the summer                      | ■ Restrooms                         |
| ■ <i>Michilimackinac: Crossroads of the Great Lakes</i> Movie | ■ Merchant's House                        | 17 Southeast Rowhouse                                | 21 Land Gate                        |
| 6 Guardhouse  | ■ Soldier's House                         | ■ Lt. Clowes' House                                  | 22 Native American Encampment       |
| 7 Northwest Rowhouse  | ■ <i>Attack! at Michilimackinac</i> Movie | ■ Solomon-Levy House                                 | 23 Restrooms                        |
| ■ British Trader's House                                      | 12 Military Latrine                       | 18 South Southeast Rowhouse*                         |                                     |
| ■ <i>Treasures from the Sand</i> Exhibit*                     | 13 Soldiers' Barracks                     | ■ Powder Magazine & Firearms on the Frontier Exhibit |                                     |
|   | ■ <i>Redcoats on the Frontier</i> Exhibit |  |                                     |

## TODAY'S EVENTS

### PROGRAMS WILL BE ANNOUNCED AT THE PARADE GROUND

- |            |   |
|------------|---|
| 10:00 a.m. | People of the Fur Trade Program                                       |
| 11:00 a.m. | Artillery Firing Demonstration  |
| 12:00 p.m. | The Pleasures of the Table: Dining Culture at Michilimackinac Program |
| 12:30 p.m. | Musketry Firing Demonstration   |
| 1:00 p.m.  | Michilimackinac 1775: Outpost on the Edge Program                     |
| 2:00 p.m.  | Slavery at the Straits Program  |
| 3:30 p.m.  | Artillery Firing Demonstration  |
| 4:00 p.m.  | People of the Fur Trade Program                                       |
| 5:00 p.m.  | Gardens of Michilimackinac Program                                    |
| 6:00 p.m.  | Musketry Firing Demonstration   |
| 7:00 p.m.  | Colonial Michilimackinac Closed for the Day                           |

Schedule subject to change to accommodate special events.



#### TODAY'S HOURS

9:30 a.m. to 7:00 p.m.  
last admission at 6:00 p.m.



Colonial Michilimackinac is owned and operated by the Mackinac Island State Park Commission. Protecting, preserving and presenting Mackinac's historic and natural resources since 1895.

©2025 Mackinac Island State Park Commission