



2017 Annual Report

Mackinac State Historic Parks

Annual Report 2017

The Mackinac Island State Park Commission was created by the Michigan legislature on May 31, 1895. The commission's purpose was to administer Michigan's first state park, which had previously been Mackinac National Park, the United States' second national park, from 1875 to 1895. The commission's jurisdiction was extended in 1909 to Michilimackinac State Park in Mackinaw City, Michigan's second state park. Over 80 percent of Mackinac Island is now included within the boundaries of Mackinac Island State Park, which also contains Fort Mackinac historic site. Colonial Michilimackinac and Old Mackinac Point Lighthouse are located within Michilimackinac State Park. In 1983 the commission also opened Historic Mill Creek State Park, east of Mackinaw City. The historic sites and parks are together known as Mackinac State Historic Parks. Annual visitation to all these parks and museums is nearly 1,000,000. Mackinac State Historic Parks has been accredited by the American Alliance of Museums since 1972.

**WE PROTECT, PRESERVE AND PRESENT MACKINAC'S RICH HISTORIC AND
NATURAL RESOURCES TO PROVIDE OUTSTANDING EDUCATIONAL AND
RECREATIONAL EXPERIENCES FOR THE PUBLIC.**



CHUCK YOB
CHAIRMAN
FREMONT

RICHARD A. MANOOGIAN
VICE CHAIRMAN
TAYLOR

MARY CALLEWAERT
SECRETARY
MACKINAC ISLAND

MARCIA BROGAN
BIRMINGHAM

WILLIAM DEARY
JACKSON

DANIEL LOEPP
BIRMINGHAM

WILLIAM K. MARVIN
MACKINAW CITY



Dear Friends,

Mackinac State Historic Parks is pleased to share the story of another successful year. In 2017 we continued to fulfill our mission by restoring and preserving historic structures, acquiring and collecting historic objects, discovering the past through documentary and archaeological research, protecting and enhancing our natural resources, and sharing our rich history through exhibitions, presentations and publications.

Notable accomplishments included installing new exhibits at the Fort Mackinac Post Guardhouse, British Landing Nature Center, and Historic Mill Creek Discovery Park. Structural improvements included reroofing and painting several historic buildings, resurfacing the Mackinac Island Airport, repairing the Old Mackinac Point Lighthouse Fog Signal Building chimney, and installing a new drainage system at Historic Mill Creek Discovery Park.

We continue to share the rich history of our sites through our publications and education outreach program and completed our 59th consecutive year of historical archaeology at Colonial Michilimackinac. We also completed phase one of remodeling the second floor of the Mackinac Island Visitor's Center for the Artist in Residence program and began construction of the Mackinac Island Botanical Trail. All of this was accomplished while successfully hosting nearly 1,000,000 park and historic sites guests and managing our accounting and personnel systems.

As always, we appreciate the great support of the Mackinac Associates board of directors and membership. Their support in 2017 helped fund a multitude of important projects that allowed us to successfully fulfill our mission of protecting, preserving and presenting Mackinac's rich historic and natural resources.

On behalf of the Mackinac Island State Park Commission and the Mackinac State Historic Parks staff -
Thank You!



Chuck Yob, Chairman
Mackinac Island State Park Commission



Phil Porter, Director
Mackinac State Historic Parks

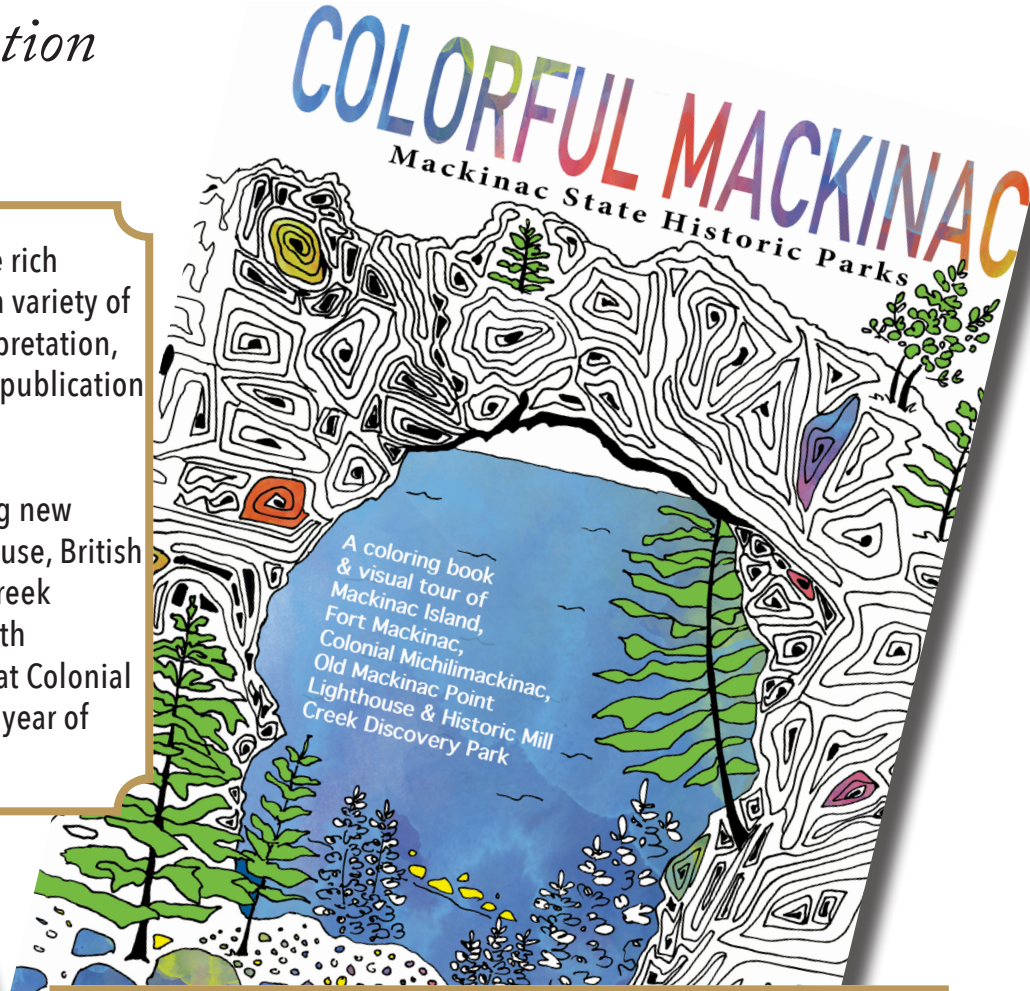


Sharing the Rich History of Mackinac

Interpretation, Education and Publications

Mackinac State Historic Parks presents the rich history of the Straits of Mackinac through a variety of resources including exhibits and live interpretation, education activities, and a comprehensive publication program.

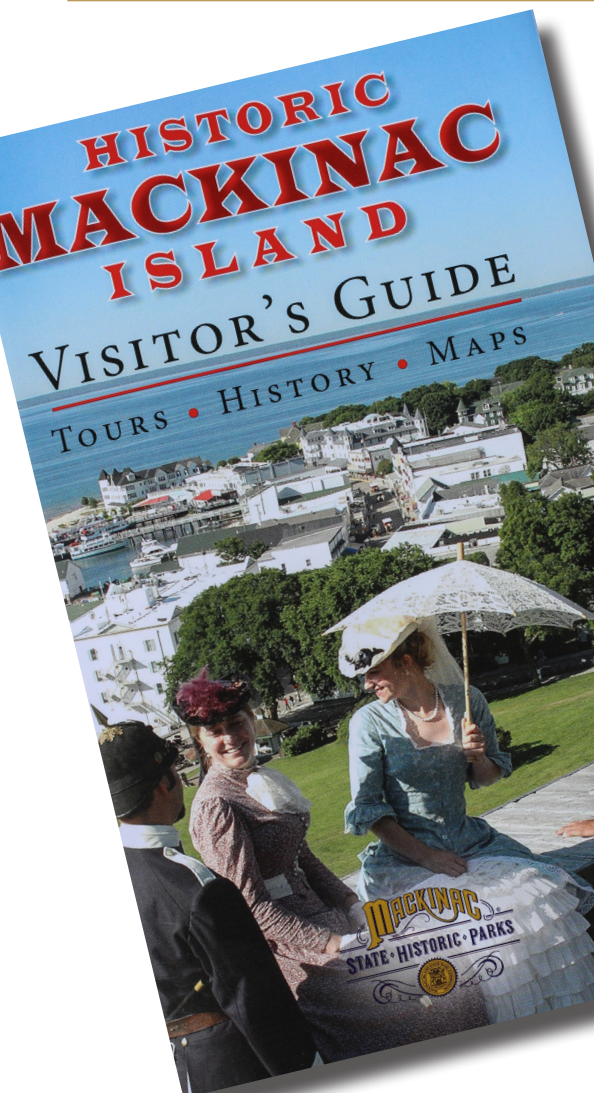
New initiatives for 2017 included installing new exhibits at the Fort Mackinac Post Guardhouse, British Landing Nature Center, and Historic Mill Creek Discovery Park. We have completed our 59th consecutive year of historical archaeology at Colonial Michilimackinac and our 29th consecutive year of education outreach programs.



Above: Colorful Mackinac, published in 2017.

Left: The Historic Mackinac Island Visitor's Guide, published every year since 1962. 3,934,870 guidebooks have now been sold.

Below: Awards ceremony for "Mackinac in Motion," the 2017 juried exhibition at The Richard and Jane Manoogian Mackinac Art Museum.



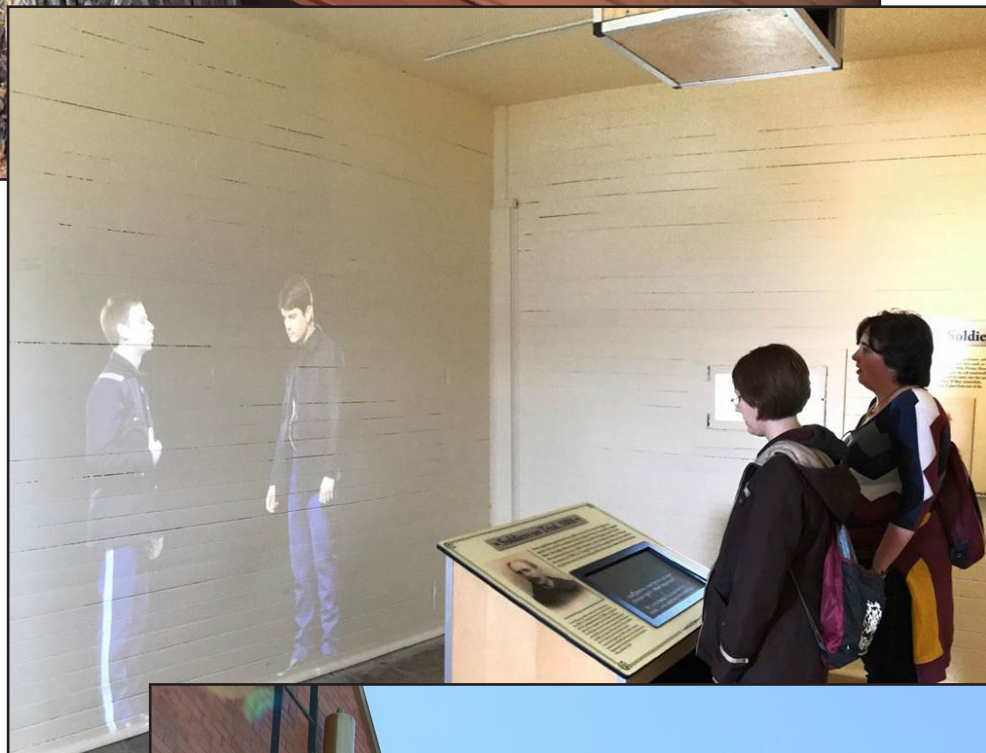


Above: The centerpiece of the re-opened British Landing Nature Center.

Right: The new interactive exhibit at the Fort Mackinac Post Guardhouse.

Bottom Right: The working Fog Signal whistle at Old Mackinac Point Lighthouse, newly installed for the 2017 season.

Bottom: Part of the new "Sounds of the Forest" interpretive stop on one of the nature trails at Historic Mill Creek Discovery Park.



Right: 'Historic Mackinac on Tour' completed its 29th year of education outreach, and 'Water, Woods and Wildlife' completed its 25th. Each year, about 130 programs are presented throughout the state, reaching nearly 8,000 students. Programs were conducted as far away as Grand Rapids, Marquette and Detroit.

Below: Mackinac State Historic Parks welcomed 792 school groups and 37,546 students on group visits into its historic sites in 2017. This represents an 11% increase in total school groups and a 13% increase in student numbers over 2016.



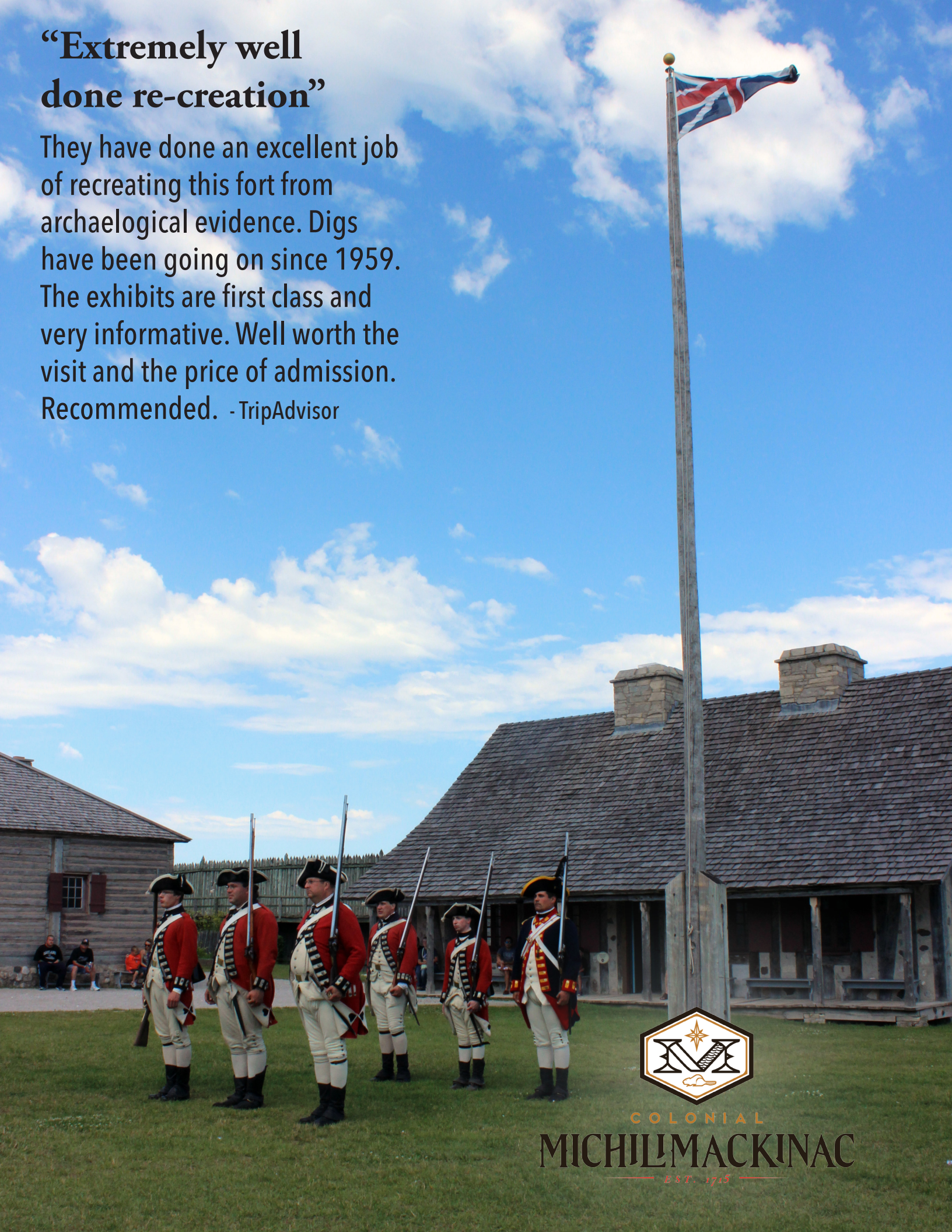


Starting at the top, clockwise: Native American History and Culture weekend at Colonial Michilimackinac; Downtown Mackinac by Candlelight special event; a skeleton soldier at Fort Fright; Gardens and Good Things to Eat weekend at Colonial Michilimackinac.



“Extremely well done re-creation”

They have done an excellent job of recreating this fort from archaeological evidence. Digs have been going on since 1959. The exhibits are first class and very informative. Well worth the visit and the price of admission. Recommended. - TripAdvisor



COLONIAL
MICHILIMACKINAC
EST. 1715

Treasures from the Sand

Archaeology at Michilimackinac



On August 26 the archaeology field crew completed this summer's excavation at House E of the Southeast Rowhouse at Colonial Michilimackinac. This was the 59th consecutive summer of excavations at Michilimackinac, making it one of the longest-running archaeology programs in North America. House E was first occupied by Charles Henri Desjardins de Rupallay de Gonneville, and later by an as-yet-unidentified English trader.

This summer was particularly rich in trade goods. Notable artifacts included three pieces of trade silver, including a triangular pendant, a cone and a circular brooch. Trade silver is a good time marker for the British fur trade in the Great Lakes region, but has not been commonly found at Michilimackinac. Other adornment items included several buttons, a buckle frame, and two brass rings with glass or "paste" stones. A more personal, rather than trade good, find was a small cast brass crucifix.

In addition to artifacts, we found more evidence of the structure itself. Late in the season we found a row of burnt posts from a previously unknown interior house wall. They extend north into an unexcavated area.



Collections Acquisitions

This year, 102 gifts and 85 purchases were accessioned into our permanent museum collection. Each object accepted by the commission was carefully evaluated as to whether it falls within our scope of collections and helps preserve and present Mackinac's rich and varied history.

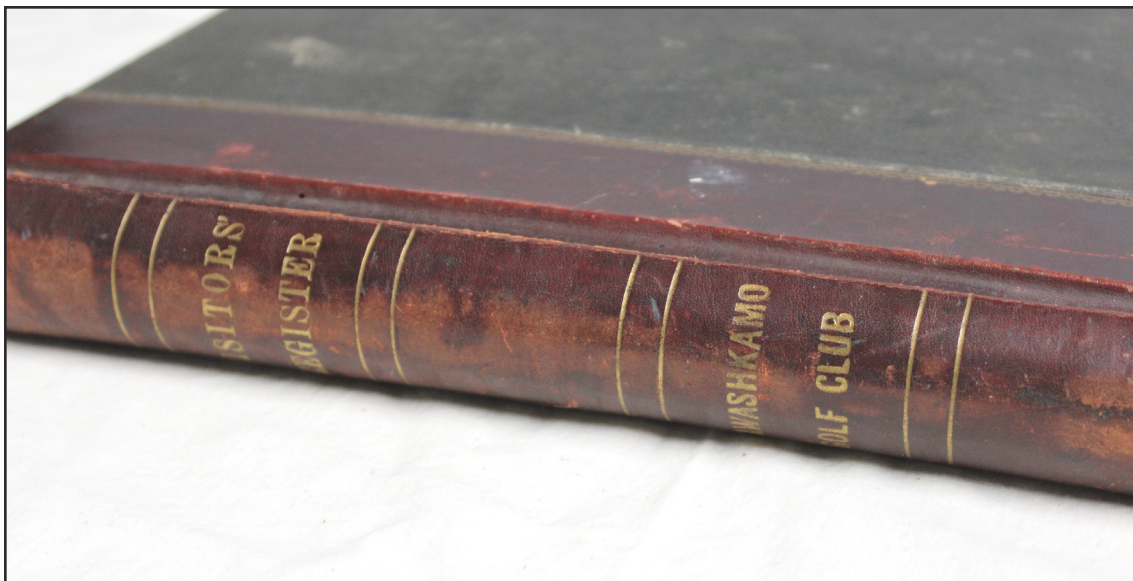
Significant acquisitions to the art collection included a donated watercolor of the Mackinac Island harbor by noted Grand Rapids artist Mariam Suleeda and a watercolor by Stanley Bielecky purchased through the Martin and Patricia Jahn Collections Development Fund. Another fund purchase was a mezzotint by Reynold Weidenaar of the Mackinac Bridge. The artist completed three works on this subject and we now have an example of each.

Two significant archival collections were acquired. Little Stone Congregational Church donated its records, dating from 1904 to 2014, and Wawashkamo

Golf Club donated its visitor registers, dating from 1900 to 2012. As with the Arnold Transit Company collection acquired last year, they will be preserved, catalogued and available to researchers. A smaller archival collection was also donated from a descendent of the Brown family, of Brown's Brook fame. It consisted of several scrapbooks documenting the family's life in the early twentieth century at Mackinac and elsewhere. Additional acquisitions of archival ephemera include Great Lakes navigation brochures, Grand Hotel stationery, and a ticket for the 1941 "Hackmen's Ball."

A variety of other objects were also acquired including numerous photographs, postcards and stereoview cards. Souvenir china, glassware and other vintage souvenirs were also added, including several examples of "balsam pillowcases." As always, a number of purchases were for exhibit period settings, including objects for the newly installed Guardhouse at Fort Mackinac.





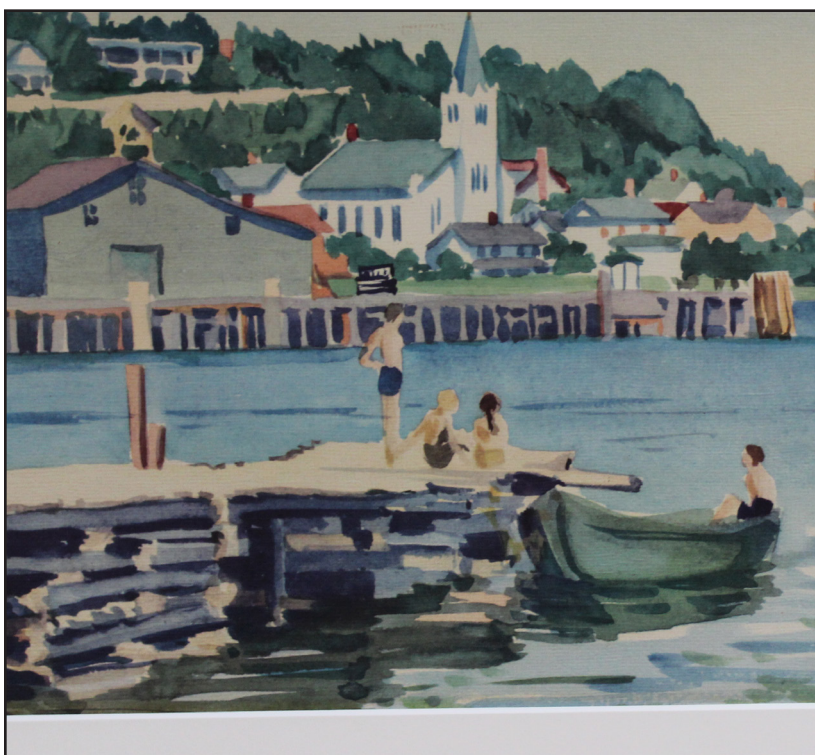
Left: A visitor's register from Wawashkamo Golf Club.

Middle Left: Ticket from the 1941 "Hackmen's Ball."

Middle Right: Grand Hotel stationery.

Bottom Left: Watercolor of the Mackinac Island harbor by noted Grand Rapids artist Mariam Suleeda.

Opposite: View of carriages on Main Street by Stanley Bielecky.



Collection Donors

David Doss
 Lenawee County Historical Museum
 Jeri Gustafsson
 Martin and Patricia Jahn
 Brian Jaeschke
 Mackinac Island Carriage Tours
 Glenna J. Paukstis
 Kathlyn DePauw-Cuneo
 Walter K. Hannabass
 Dr. Keith Widder
 Dena Armantrout
 Charlie Putkammer
 Robert McGreevy
 Wawashkamo Golf Club
 James B. Larsen
 Chuck and Jeri Feltner
 Sally Zorn
 Little Stone Church

Attendance

Productive Business Partnerships

Mackinac State Historic Parks enjoyed another strong attendance year in 2017. Exciting public programs and exhibits, an effective media and marketing campaign, and productive partnerships with several area organizations and businesses drew visitors to our sites from across the globe. Overall attendance topped 360,000 visitors and admission income exceeded \$3,300,000, the highest ever. Nearly 30% of tickets sold to a MSHP historic site came from somewhere other than an MSHP admission window. Below is a list of local, regional and national admissions partners:

Shepler's Mackinac Island Ferry
Diamond Tours
Island House Hotel
Grand Hotel
Lakeshore Excursions
Inn on Mackinac
Mackinac Island Carriage Tours
Mackinac Revealed
Lake View Hotel
Baymont Inn & Suites
mParks
Chippewa Hotel
Road Scholar
Educational Tours
Sunriseside Travel
Harbour View Inn
Explorer Tours
Mackinac Event Planning

Star Line Mackinac Island Ferry
Mackinaw City Chamber of Tourism
Mission Point Resort
Murray Hotel
Troop Mackinaw
Great Adventure Tours
Gerald R. Ford Scouts
Brightspark Travel
Bob Rogers Travel
Holiday Inn Express
Tauck World Discovery
Central Michigan University
Midwest Tours
Student Adventures
Greenlight Group Tours
Gate 1 Travel
Premier World Discovery
The Inn at Stonecliffe

2017 Attendance



0.54%



5.28%



0.95%



0.30%





OLD MACKINAC POINT
LIGHTHOUSE
ESTD 1889

“Honeymoon visit”

We visited the lighthouse on our honeymoon and were really glad we did. The grounds were very well kept and were beautiful. The information was really nice and plenty of it. The staff was very nice and helpful. I really liked the video and museum about all the wrecks that happened around the Mackinac Straits. I would really suggest this stop for anybody and everybody! - TripAdvisor

Outstanding Visitor Experiences

Mackinac State Historic Parks' Native American Cultural History Trail was honored with the Midwestern History Association's "Alice Smith Prize in Public History" in June.



Nine of Mackinac State Historic Parks' sites were awarded the TripAdvisor Certificate of Excellence in 2017.



"Certificates of Excellence" are awarded to attractions that consistently receive great traveler reviews on TripAdvisor.

Fort Mackinac
Colonial Michilimackinac
Historic Mill Creek Discovery Park
Old Mackinac Point Lighthouse
The Richard and Jane Manoogian
Mackinac Art Museum
Biddle House
Fort Holmes
Mackinac Island State Park
Arch Rock

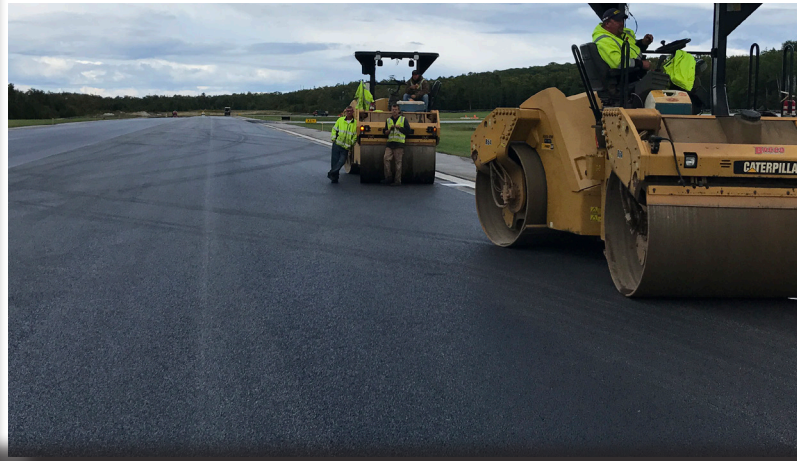


Protect and Preserve

Improving our Parks



One million visitors toured Mackinac State Historic Parks in 2017. The commission continued its uncompromising efforts to care for and improve its park resources for these travelers from around the world. Park enhancement projects for 2017 included re-roofing and painting multiple structures, installing a new entrance sign at Colonial Michilimackinac, combating invasive species, and resurfacing the Mackinac Island Airport runway.



In 2017, the commission received a \$545,000 bequest from the estate of Marianne R. Pettegrew for the preservation of Old Mackinac Point Lighthouse. With the proceeds, the commission created the Marianne R. Pettegrew Old Mackinac Point Lighthouse Fund. The first project funded by the bequest was the repair of the Fog Signal Building chimney.



Helping Hands

Volunteers

In 2017 volunteers donated 29,971 hours of service to Mackinac State Historic Parks. Volunteers supported a wide variety of activities including historical archaeology, collections management, interpretation, park maintenance and visitor service. As usual, the largest number of volunteer hours was recorded by the more than 800 boy and girl scouts who participated in the Mackinac Island Scout Service Program.



Above: Nearly 300 hours of volunteer time helps the hugely successful Fort Fright operate.

Below: The Mackinac Island Scout Service Program has been a staple of the island and Fort Mackinac since 1929.



There's Nothing Like Good Friends!



Mackinac Associates completed another successful year in support of Mackinac State Historic Parks. Our support benefited all of MSHP's sites, parks and areas of operation. We proudly supported the Fort Mackinac Guardhouse exhibit renovation. We also provided seed money to begin a new archaeology fund, funded the re-configuration of the Mackinac Art

Museum galleries, an exhibit pod at Historic Mill Creek Discovery Park, and an environmental education exhibit at British Landing Nature Center, updated the Kid's Quarters interactive exhibit at Fort Mackinac, erected a new entrance sign at Colonial Michilimackinac, and much more. As always Mackinac Associates supported the Education Outreach program and provided scholarships to schools for Mackinac field trips. Mackinac Associates support to Mackinac State Historic Parks totaled \$206,200. This support is made possible by our members and donors who support us through dues and contributions. Many of these members generously upgraded to higher levels of membership in 2017 for which we are very appreciative.

Mackinac Associates members were invited to several events in 2017. The 29th annual G. Mennen Williams Mackinac Celebration was hosted by Sandy Phillips and had the greatest attendance in the history of the event. The annual meeting was more participatory than usual with a short tutorial on the game of cricket followed by a match played by attending members. A donor's reception was held at the Biddle House, which will undergo renovation and reinterpretation soon. Guests had the opportunity to learn about preliminary plans.

In 2017 Mackinac Associates celebrated its 35th anniversary. In 1982, a few local residents decided that it would be good to form an organization that could help to support Mackinac State Historic Parks' preservation needs. Membership dues in the first few years helped with restoration of Mission Church and McGulpin House. Over the years, Mackinac Associates has provided more than \$3.7 million in support for Mackinac State Historic Parks' projects. A few friends in the early '80s has grown to more than

a few thousand and Mackinac Associates have supported projects in every park and site fulfilling its mission as "friends preserving and sharing Mackinac's heritage."

Board of Trustees

Peter Pellerito, *President*
Harriet McGraw, *Vice President*
Tom Lockwood, *Secretary/Treasurer*
Jack Barnwell
Mary Jane Barnwell
Jeb Burns

Kathy Lieder
Wesley Maurer
Mark Mercer
Ann Parrish
Todd Petersen



“Don’t miss this hidden gem!”

Our friends took us here and we were all pleasantly surprised. What an absolutely great park!! We took the tour which included a nature hike, a walk across a wilderness bridge, and zip lining. Our tour guide was very nice and quite knowledgeable. Afterwards we went to the mill demonstration and the gentleman there was positively fascinating! We all thoroughly enjoyed our visit and can’t say enough good about Historic Mill Park. It was well worth every penny we spent and we would all go again! - TripAdvisor



**HISTORIC
MILL CREEK**
Discovery Park



“Historic”

A step back in time. From the well preserved and rebuilt fort and buildings to the realistic reenactments and demonstrations, you can see what early military, traders and settlers went through on a daily basis. This is a great display of history! - TripAdvisor

FORT MACKINAC
ESTABLISHED 1780

