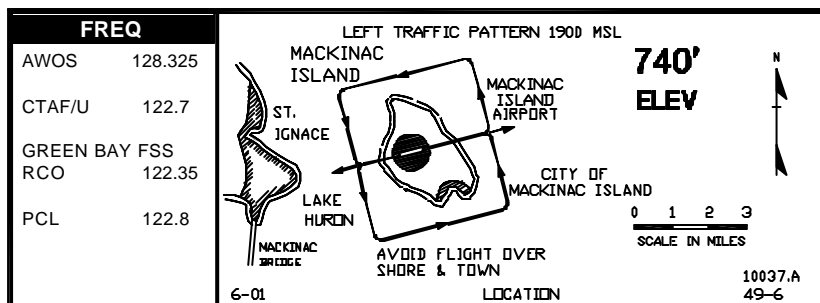
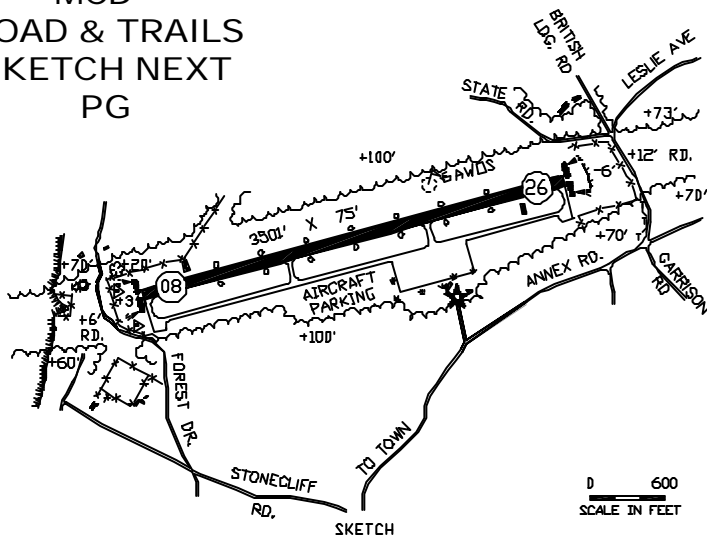


# MACKINAC ISLAND (MCD)



RWY 08/26 3501' X 75'  
(1067m X 23m)

## MCD ROAD & TRAILS SKETCH NEXT PG



### RWY LENGTH BEYOND DISPLACED THR

08/ —  
26/ —

### COORDINATES

45° 51.89'N  
084° 38.24'W

### License

General Utility

**FM CITY:** 2.0 mi NW

**LGT:** ROTG BCN. MIRL, PAPI, REILS—STD  
PCL 122.8.

**MGR:** Dan Cook  
Dennis A. Bradley, Asst

**PH:** 906-847-3231  
906-847-3923 (Unatnd Pay)

**FBO:** None

**ATND:** Jun-Aug 0700-1900,  
Sep-Oct & Jan-May 0730-1730  
Nov-Dec 0800-1700

**RDO NAV AIDS:** IAP, 111.8 (PLN) 011° 14.1  
NM to fld.

**FUEL:** None

**RPR:** None

**WX:** FSS GRB 800-992-7433,  
AWOS 906-847-3778, Weathermation

**SNW RMVL:** Yes

**TRNSP:** Taxi (horse carriage)

**MEALS:** In town, 2.0 mi

**RON:** In town, 2.0 mi

- TPA 1900' MSL (1160' AGL) .
- Noise abatement proc—climb to TPA (1900' MSL) before turn, avoid flight over shore & town.
- T&G ldg prohibited.
- Lndg fee.
- Admin bldg access—depress V, then simultaneous III-II, then I.
- Birds invof aprt.
- No camping allowed.

# MACKINAC ISLAND ROAD & TRAILS

